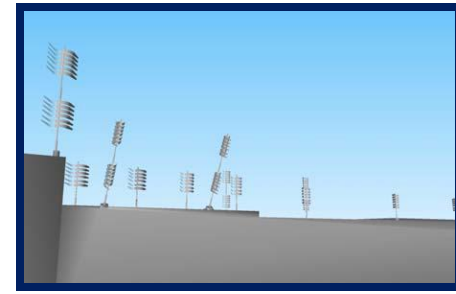
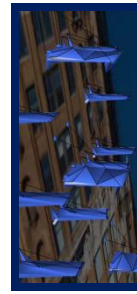
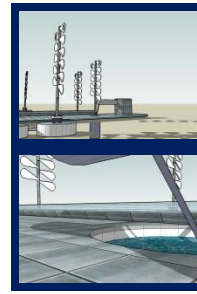
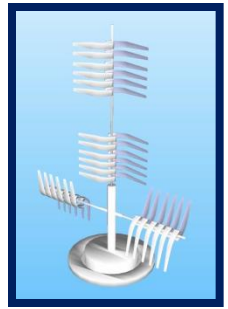


GLOBAL CLEAN ENERGY SOLUTIONS

www.omarsolh/gces

Omar Solh B. Arch - M. Arch UIA IA-AIA

66 Witherspoon Street # 180 Princeton, New Jersey 08542 Tel: 646-315-3614 USA
P. O. Box 14-6383 Tel: 961-76-754767 Beirut-Lebanon **email:** omarsolh@omarsolh.com



New York City (East and Hudson Rivers) GCES Wind Cone Simulation. Partly developed as a Simulation exercise for the City of New York.

Saint Charles City Center (Holiday Inn) - Beirut - Roof Top Photovoltaic and Wind Cone Simulation as part of an adaptive use of self standing VAWT (Vertical Access Wind Turbines) and PV Panels on a single medium rise building in Beirut, Lebanon.

Rouche - Beirut - Wind Cone (Pigeons Rock) and Floating Wind Cone Simulation adaptive to Active Coastal Wind Conditions in Beirut. Similar conditions can be suggested in other areas throughout Lebanon and MENA Region.

The following Simulations are presented for information purposed only and are subject to change without written notification to all proposed Stakeholders (Academic, Private and Public) Both in North America and Middle East.

"Give me a Plantation and I will provide you with a Civilization"

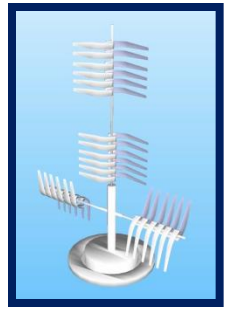
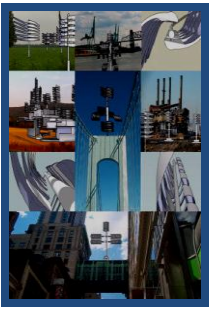
Wise Words from the Late Sheikh Zayed, Former Ruler of Abu Dhabi and President of United Arab Emirates.

GLOBAL CLEAN ENERGY SOLUTIONS

www.omarsolh/gces

Omar Solh B. Arch - M. Arch UIA IA-AIA

66 Witherspoon Street # 180 Princeton, New Jersey 08542 Tel: 646-315-3614 USA
P. O. Box 14-6383 Tel: 961-76-754767 Beirut-Lebanon **email:** omarsolh@omarsolh.com

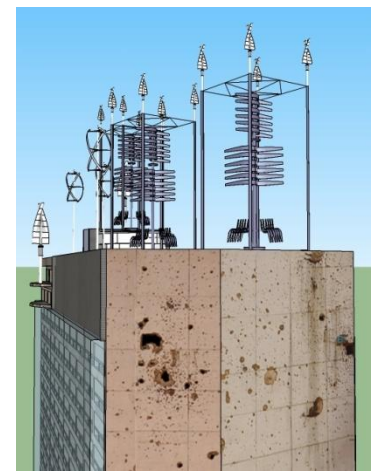
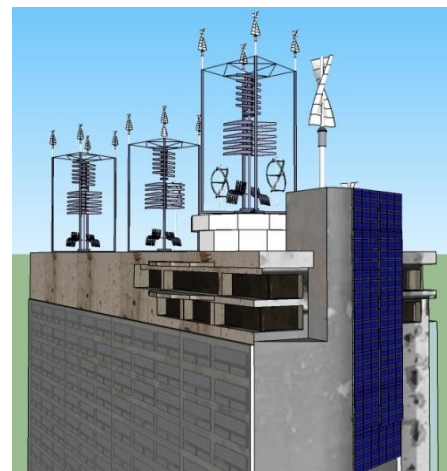
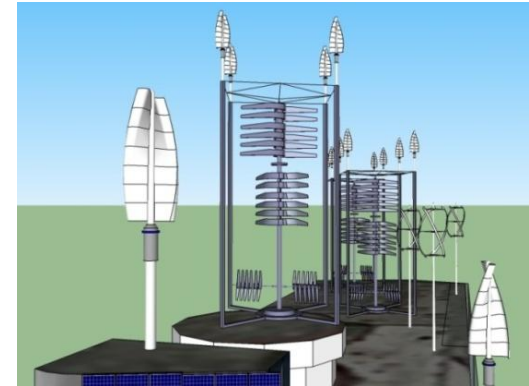
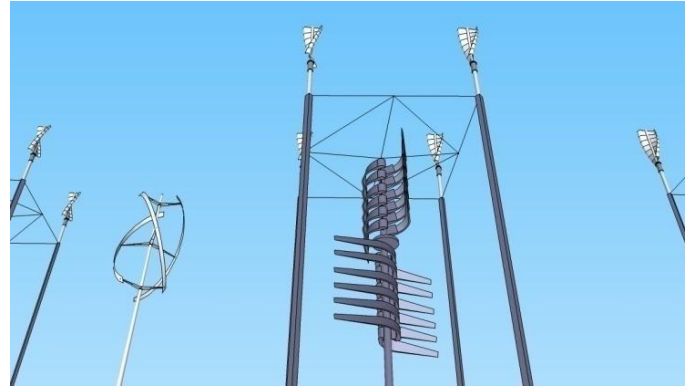
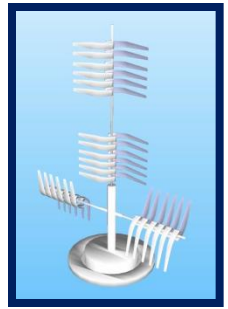


GLOBAL CLEAN ENERGY SOLUTIONS

www.omarsolh/gces

Omar Solh B. Arch - M. Arch UIA IA-AIA

66 Witherspoon Street # 180 Princeton, New Jersey 08542 Tel: 646-315-3614 USA
P. O. Box 14-6383 Tel: 961-76-754767 Beirut-Lebanon **email:** omarsolh@omarsolh.com



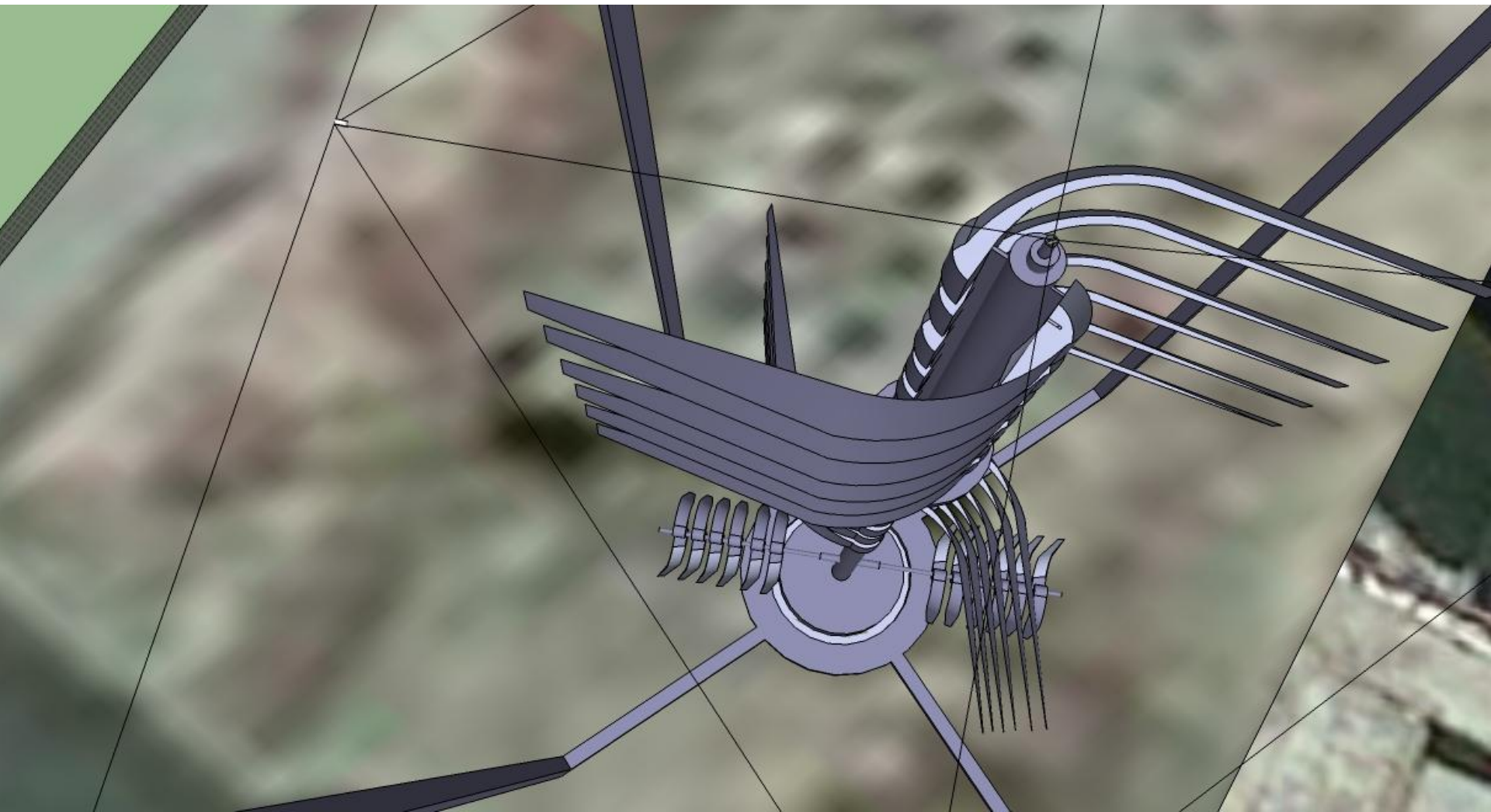


GLOBAL CLEAN ENERGY SOLUTIONS

www.omarsolh/gces

Omar Solh B. Arch - M. Arch UIA IA-AIA

66 Witherspoon Street # 180 Princeton, New Jersey 08542 Tel: 646-315-3614 USA
P. O. Box 14-6383 Tel: 961-76-754767 Beirut-Lebanon **email:** omarsolh@omarsolh.com

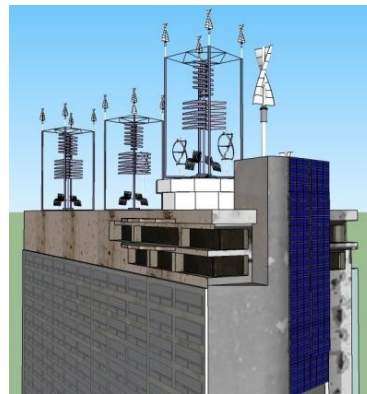
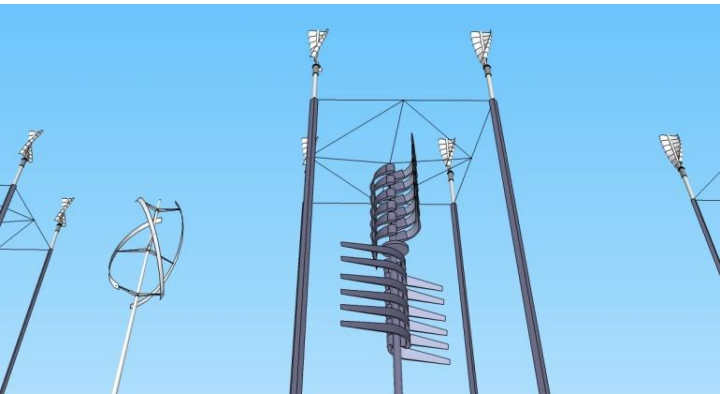
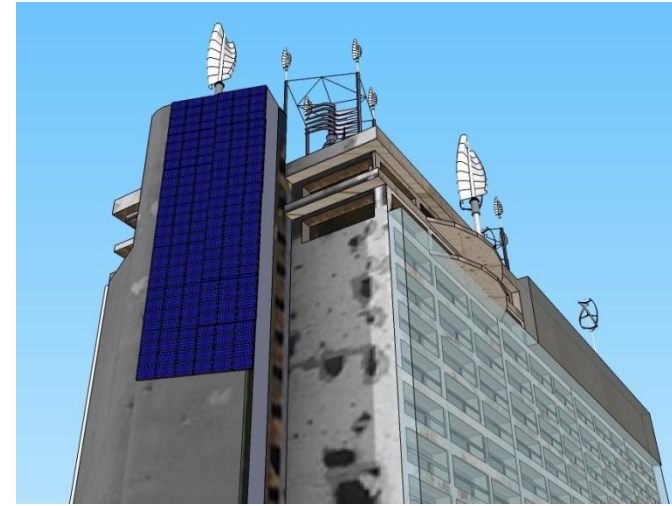
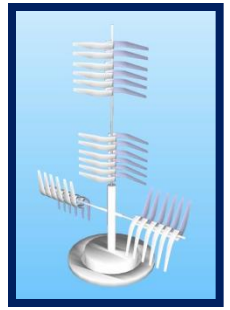


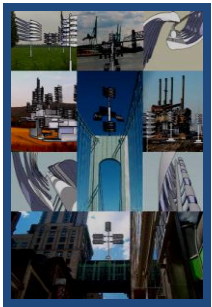
GLOBAL CLEAN ENERGY SOLUTIONS

www.omarsolh/gces

Omar Solh B. Arch - M. Arch UIA IA-AIA

66 Witherspoon Street # 180 Princeton, New Jersey 08542 Tel: 646-315-3614 USA
P. O. Box 14-6383 Tel: 961-76-754767 Beirut-Lebanon **email:** omarsolh@omarsolh.com





GLOBAL CLEAN ENERGY SOLUTIONS

www.omarsolh/gces

Omar Solh B. Arch - M. Arch UIA IA-AIA

66 Witherspoon Street # 180 Princeton, New Jersey 08542 Tel: 646-315-3614 USA
P. O. Box 14-6383 Tel: 961-76-754767 Beirut-Lebanon **email:** omarsolh@omarsolh.com

